

University owned accommodation

The university owns several types of rooms, flats and apartments that are available to international staff. Most properties are intended for long lets. Short stay accommodation provides a base from which staff can find a more permanent home.

Long stay accommodation (minimum one month to max. up to 5 year)

Anatomy building

The historic Anatomy building was completed in 1885 and was used as a laboratory and lecture hall for the LUMC until 2007. The building was completely renovated in 2015 and subsequently modernized for housing for PhDs and post docs.

The Anatomy complex consists of the old Anatomy building and a 12-storey apartment tower. The complex offers 168 unfurnished apartments in total. It is owned by the Foundation Stichting Universitaire Woonwijk Boerhaave.

The complex is located at the Bioscience Park Leiden between the LUMC, Faculty of Social Sciences and the ICLON building.

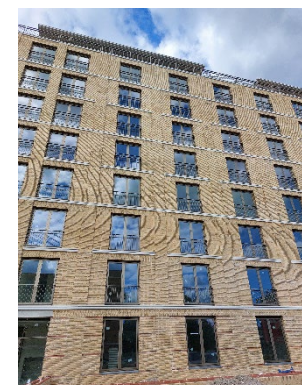


Apartments	Type	Amount
Van Rijsselpad	Single studio apartment (with/without loft)	26
Van Rijsselpad	2 room apartment	50
Verhaartpad	Single studio apartment	8
Verhaartpad	2 room apartment	2
Dankmeijerpad	Single studio apartment	79
Dankmeijerpad	2 room apartment	1
Dankmeijerpad	3 room apartment	2

Boerhaave-complex

The Boerhaave complex is a home to many of our PhDs and consists of two 4-storey buildings and one 8-storey building. The unfurnished apartments are made up of 2, 3 and 4 rooms. The larger apartments are suitable for families with children. The Van Swietenstraat was completed in 2019, the Boerhaavelaan low rise in 2020, The Boerhaavelaan high rise is 2022 and the Marienpoelstraat in 2024. It is owned by the Foundation Stichting Universitaire Woonwijk Boerhaave.

The apartment buildings are conveniently located just outside Leiden's historic city centre. Close to Leiden Central Station and Bioscience Park Leiden.



Apartments	Type	Amount
Boerhaavelaan	2 room apartment	48
Boerhaavelaan	3 room apartment	24
Boerhaavelaan highrise	2 room apartment	49
Boerhaavelaan highrise	3 room apartment	17
Boerhaavelaan highrise	4 room apartment	1
Van Swietenstraat	2 room apartment	48
Van Swietenstraat	3 room apartment	18
Van Swietenstraat	4 room apartment	4
Marienpoelstraat	2 room apartment	45
Marienpoelstraat	3 room apartment	6

Haarlemmerstraat 73

This characteristic building is located in the heart of the historic Centre and was built in 1899. It is owned by the Foundation ‘Stichting Universitaire Woonwijk Boerhaave’ and has 14 apartment for our international staff. This location is not suited for children.

The building is located in the heart of Leiden historic centre.



Room	Type	Amount
C, D, E, F, G, H, J, K, L, M, N, P, R, S	Single studio apartment	14

Groenesteeg 26

Unique location near “Begraafplaats Groenesteeg”. It has an outside terrace and is meant for one person or a couple. The apartment is not suitable for children.



Waardgracht

The Meelfabriek building was built in the fall of 2018, so it is quite new. The apartments are completely renovated, unfurnished and have upholstery (curtains and carpeting).

The building is located within the canals in Leiden and in the city centre.



Room	Type	Amount
89, 91, 93, 95, 97, 99, 127, 129 131, 133, 135, 137, 139, 141, 143	Single and double rooms	15

Sigmaplantsoen

Building was built in 2019. Beautiful complex with a nice mix of with students and young professionals.

The building is located near Lammeschans Station and close to the city centre.



Room	Type	Amount
101, 129, 161, 193, 225,	2 rooms apartments	5

Short stay accommodation (minimum one month to max. 6 months)

University Lodge (5e Binnenvestgracht 7)

The University Lodge is a small house with two living units in the heart of the historical centre of Leiden. Long before it became the University Lodge the house was the home of Prince Constantijn of the Netherlands. The lodge is furnished. This accommodation is not suitable for children.



The apartments are located in Leiden historic centre, close to the faculties of Law and Humanities and the famous Hortus Botanic.

The apartments are fully renovated in 2022.

Hogewoerd 144

This monumental building at Hogewoerd 144 is a former auction house situated in a quiet street in the town centre. It has been totally renovated and adapted to the requirements of this age without losing its original character. The building is owned by DUWO Leiden. Two furnished apartments are reserved for international employees. This location is not suited for children.



The apartments are located in Leiden historic centre, close to the faculties of Law and Humanities and the famous Hortus Botanic.

Room	Type	Amount
144F, 144N	Double studio apartment	2

Hooigracht & Middelstegracht

This building is classified as a historical monument with its history going back to 1892. It has been used for various purposes and has had a variety of occupants but in Leiden it is known foremost as the former Elisabeth Hospital (1892-1972). In 2001 it was acquired by housing company 'DUWO Leiden' and has since been used mostly for housing international students. 9 Furnished apartments are reserved for international employees. This location is not suited for children.

In 2007 the building was completely renovated and modernized but its



character remains intact. The stained glass, the original ornaments, the enclosed garden and colors used for the interior remind one of times past.

The apartments are located in Leiden historic centre, close to the faculties of Law and Humanities and the famous Hortus Botanic.

Room	Type	Amount
Hooigracht 17C, 19C Middelstegracht 4N, 4Z, 8	Single studio apartment	5

Hugo de Grootstraat 32

This building was built in 1895 and used until 1907 as a pharmaceutical laboratory and until September 2004 used by the Faculty of Law of Leiden University. In 2005 the building was completely renovated and made suitable for housing international students. 11 furnished apartments are reserved for international employees. Horizon House is a national monument and has unusual, neo-gothic arched windows. It is owned by housing corporation 'DUWO Leiden'. This location is not suited for children.



The apartments are located in Leiden historic centre, close to the faculties of Law and Humanities and the famous Hortus Botanic.

Room	Type	Amount
21, 39, 40, 41, 42, 73, 74, 75, 76, 92	Single studio apartment	10
15	Double studio apartment	1

Sterrenwachttlaan

The history of this monumental building goes back to 1861. It was completely renovated in 2017 and now contains two lovely fully furnished and equipped family homes. This location is especially suited for children.



The homes are located in Leiden historic centre, next to Leiden Observatory, close to the faculties of Law and Humanities and the famous Hortus Botanic.

No.	Type	Amount
2, 3	4 rooms	2

Wassenaarseweg 60

This renovated 4 room porters lodge was renovated in 2018 to a lovely home especially suitable for families. It has a small garden located at the back.



The house is convenient located just outside Leiden historic city centre. Close to Leiden Central Station and the Bioscience Park Leiden.

Kloksteeg 9

3 beautiful fully furnished apartments around the corner of the main building of the Leiden University. The building was completely renovated in 2019. One of the apartments has its own garden and one a big terrace.

The building is located in the heart of historic centre near the Pieterskerk.

